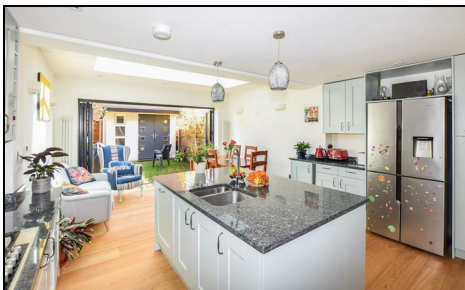


**Heathfield Drive
Mitcham, CR4 3RG**

£630,000 Freehold



A stunning rear extended four bedroom family home located on the borders of Tooting, Colliers Wood and Mitcham close to various transport links. Comprising of a fantastic fully fitted kitchen/diner/ family room with bi-folding doors that lead out onto the private rear garden, spacious lounge, downstairs W/C, four bedrooms and the family bathroom. This property also has the added benefit of off street parking making it perfect for any family.

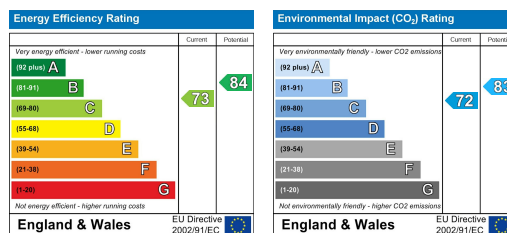
Heathfield Drive, CR4

Approximate Gross Internal Area = 118.8 sq m / 1279 sq ft
 Store = 6.2 sq m / 67 sq ft
 Total = 126 sq m / 1346 sq ft



This floor plan is for representation purposes only and is not drawn to scale.
The Gross Internal Area includes outbuildings shown on the plan.
 Whilst every attempt has been made to ensure the accuracy of the plan measurements of doors, windows and rooms are approximate only and should be checked before making any decisions reliant upon them.
 Copyright Bespokeplans.co.uk (ID 633702)

- Four Bedrooms
- Excellent Condition
- Modern Kitchen With Stone Worktops
- Rear Extended
- Downstairs WC
- Off Street Parking
- EPC Rating : C



For Free Mortgage Quote and Best Mortgage Rates, call an Ellisons Mortgage Advisor on 020 8544 0518



Although these particulars are believed to be correct, their accuracy is not guaranteed and they do not form part of any contract.

Celebrating 30 years of successful Sales and Lettings in Merton

